

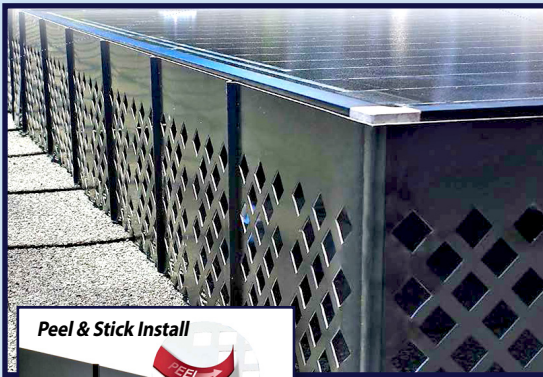
Made in the USA



SOLA TRIM™

AVAILABLE FROM NIXALITE®

BIRD, ANIMAL AND DEBRIS BARRIERS for SOLAR PANELS



Protect your solar panel investment with **SolaTrim™** Pest & Debris Barriers

SolaTrim is a long lasting, easy-to-install barrier designed to stop pest birds, nuisance animals and debris from getting under rooftop mounted solar panels. SolaTrim panels have diamond shaped holes that allow air to flow through the space behind the solar panels, keeping it cool, dry and safe from destructive pest birds, nuisance animals and combustible debris.

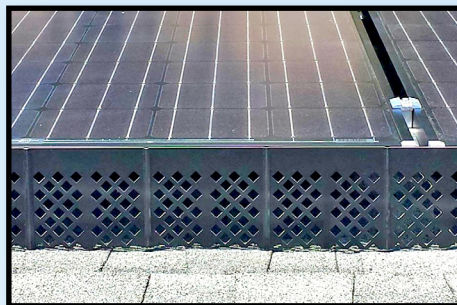


Modern adhesive technology now allows for permanent peel-and-stick bonding without the use of rivets, screws or other mechanical fasteners. SolaTrim panels use this remarkable peel-and-stick feature to makes the SolaTrim Panel installation quick, easy and permanent without damaging your solar panels with mechanical fasteners. See the Installation Guidelines on back for more details.

SolaTrim™ Panels Keep Out Uninvited Guests and Unwanted Debris

Keep Out Uninvited Pests

Stop dirty birds and destructive animals from damaging the vulnerable electrical and mechanical systems under the solar panels. SolaTrim creates a continuous gap-free perimeter barrier to keep out critters.



Keep Out Fire Hazards

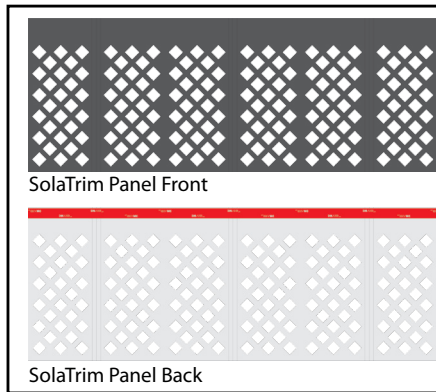
SolaTrim creates a simple, effective barrier that keeps combustible debris from accumulating under the solar panels. SolaTrim creates a continuous barrier to dried leaves, grass, paper and other rubbish.



Nixalite® of America Inc
1025 16th Avenue, East Moline, IL 61244
Experts In Architectural Bird Control Since 1950

P: 800.624.1189 or 309.755.8771
F: 800.624.1196 or 309.755.0077
E: birdcontrol@nixalite.com
www.nixalite.com

SolaTrim™ Mechanical Specifications



SolaTrim Panel Specifications:

Construction: Each panel is made from corrosion resistant 3003-H14 aluminum, 0.025" (0.63mm) thick (22 ga.)

Peel-and-stick tape: 3M acrylic foam tape on back of panel

Dimensions: Each SolaTrim panel is 48" long, 6-3/4" high, 0.025" thick (122 cm long, 17.1 cm high and 0.63 mm thick)

Weight: 11 ounces (0.68 pounds or 0.3 kg) per panel

Coating (front): black polyester coating

Coating (back): white polyester primer coating

For 3-part specifications or if you have any questions about the SolaTrim Barriers, contact Nixalite of America Inc.

SolaTrim™ Installation Guidelines

Tools:

Metal shears Tape measure
Clean cotton cloth Scribe/marker

Materials:

SolaTrim panels Acetone*
*Acetone wipes provided with 100 ft kit.

Measure Twice, Order Once:

Accurately measure the distance around the outside perimeter of your solar panels and/or arrays. Measure the distance from the roof surface to the top of your solar panel framework. It should not be



more than 7" (17.8 cm). Order enough SolaTrim panels to enclose the solar panel array perimeter.

Application Temperatures

Do NOT install when air temps exceed 105° F. (40° C.). For best results, apply between 50 - 85° F. (10 - 30° C.). Do not store below 50° F. (10° C.).

Surface Preparation:

Make sure that the solar panel frames are free of dust, oil, debris or any other foreign matter. If the frames are very dirty, use a wet cotton cloth to remove the grime and dirt. Make sure the surface is clean and dry before continuing.

Use acetone wipes to clean and prep the surface for the peel-and-stick adhesive. Each acetone wipe should prep 10-20 feet (3 to 6 meters) of surface.

ALWAYS dry fit the panel for proper fit BEFORE removing the adhesive backing. Whenever possible, install full SolaTrim panels (4 ft or 122 cm long).

Hold the SolaTrim panel flush with the top of the solar panel frame. Using a scribe or marker, transfer the locations of any obstructions or objects that will require trimming or cutting of the panel.

Make sure to cut and trim the panels so they fit tightly to the roof and around objects. A gap of 1/8" to 1/4" (3 to 6 mm) is acceptable. When cutting a panel to length, hold the panel in position and mark the length with a scribe or marker.

CHECKPOINT: you should have prepped the surface, cut and trimmed the panels and dry-fit them.

Peel the backing off of the tape and press the SolaTrim panel against the prepared surface. Apply pressure (min. 15 psi.) with your hands, roller or cotton cloth to help the adhesive foam tape conform to the solar array frame surface. The panel will stay in place immediately. The tape will reach 80% adhesion in 20 minutes and 100% adhesion in 24 hours.

To remove a panel, pull a sharp razor knife blade down the length of the adhesive tape between the solar panel frame and the SolaTrim panel. Clean off any tape residue and re-install a NEW panel following the installation guidelines from the beginning.



If you have any questions or need more information on the SolaTrim Bird, Animal & Debris Barriers, please contact us. At Nixalite, we are at your service.



Nixalite® of America Inc
1025 16th Avenue, East Moline, IL 61244
Experts In Architectural Bird Control Since 1950

P: 800.624.1189 or 309.755.8771
F: 800.624.1196 or 309.755.0077
E: birdcontrol@nixalite.com
www.nixalite.com